

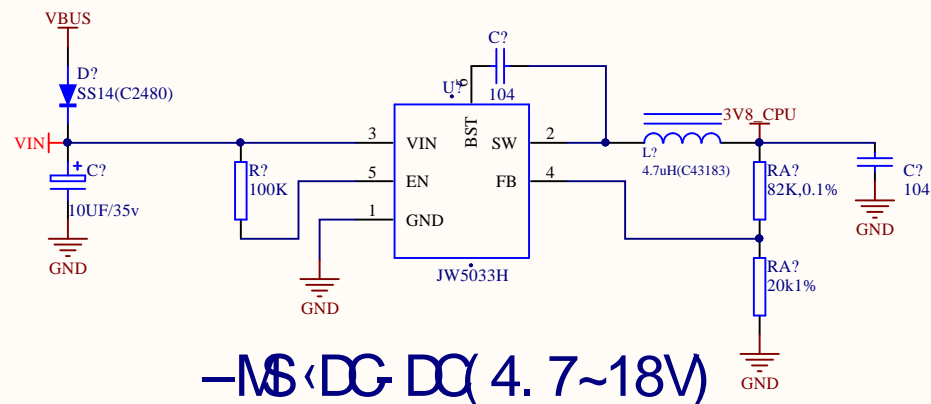
1

2

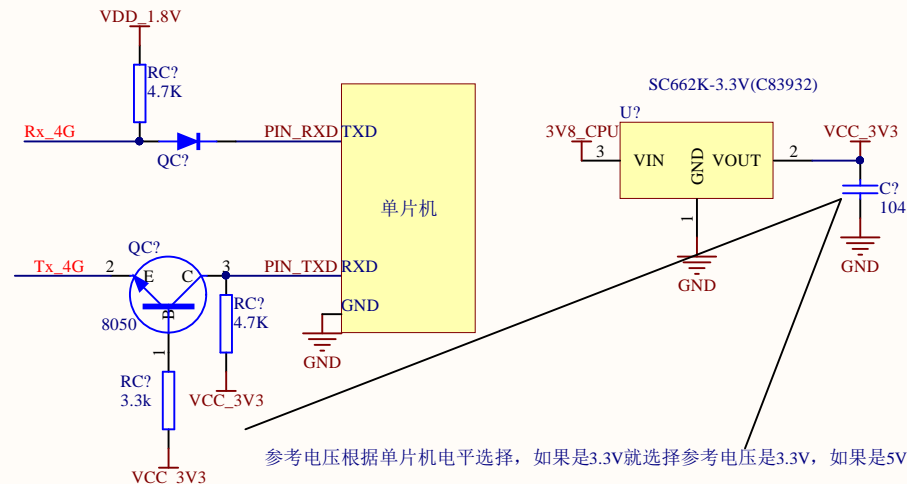
3

4

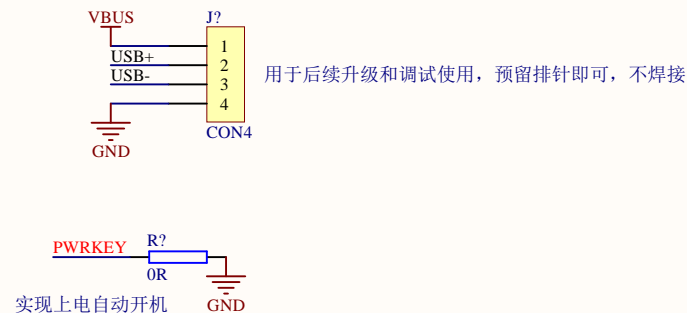
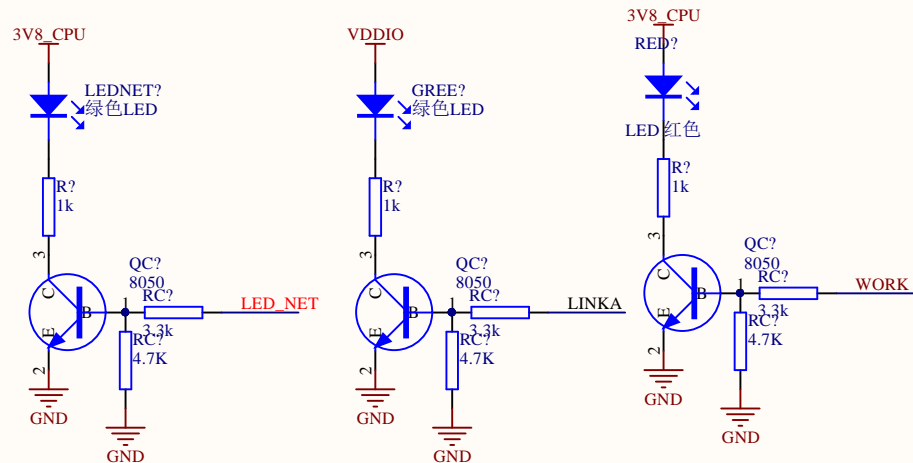
$$V_{OUT}=4.08V=0.8*(1+R1/R2)$$



$$-18 < DQ(4.7 \sim 18V)$$



参考电压根据单片机电平选择, 如果是3.3V就选择参考电压是3.3V, 如果是5V就选择参考电压5V



实现上电自动开机

Title		
Size	Number	Revision
A4		
Date:	2020-06-29	Sheet of
File:	E:\CloudStation\...\cat\参考设计.SchDoc Drawn By:	

1

2

3

4

